



www.capitalschool.co.uk



CAPITAL
SCHOOL OF ENGLISH

CAPITAL JUNIORS

*THE YOUNG LEARNERS
PROGRAMME*

CAPITAL SCHOOL OF ENGLISH PRIDES
ITSELF ON CREATING A TRULY FUN
AND ENGAGING EXPERIENCE FOR ITS
STUDENTS BOTH IN AND OUT OF SCHOOL.



At Capital School of English we place a lot of importance on learning the language from an early age. To this extent we have created some fantastic courses for our Juniors on our 'Young Learners Programme'.

By creating a programme specifically designed to fit in with your current studies the school's aim is to help you or your group to get the greatest benefit from your visit to the UK.

This is why it is so important to us that we start talking about your needs and expectations from an early stage.

To this end, for Groups, we encourage Group Leaders and Parent Representative's to visit the school, if possible, to see what we offer and to discuss the groups' specific needs. For the individual our web site carries information that will help you with your choice. Please don't forget to visit the Gallery section where there is a wide selection of photographs of our students enjoying their study in Bournemouth.

At all times it is important that the courses are designed to be fun and interactive with the emphasis on vocabulary, pronunciation, speaking and listening, designed to meet the exact requirements of the students.

It is also important that students experience studying in a multi-cultural environment, this helps build understanding and creates friendships that encompass the world.

Finally, we would like to take this opportunity to thank you for your interest. Should you require further information regarding any aspect of the school, please do not hesitate to contact us.

We look forward to seeing you very soon at Capital School of English.



Spencer Fordham
Managing Director



Your first day at school

On the first day at Capital School of English students are tested on their arrival and then placed into classes for their appropriate linguistic ability. We will also explain all the aspects of your programme and cover all the important aspects of your stay in Bournemouth.

Classes

GENERAL ENGLISH

Standard (20 lessons, 15 hours a week)

The Capital School – Young Learners Programme is an innovative and energetic course with a strong emphasis on collaborative learning and developing communication skills.

Classes range from entry level to advanced, and although the themes are whole school based, the grammar, vocabulary and language structures taught, progress with each level.

The Course is theme-based, covering weekly topics chosen specifically for their appeal to the 12-16 age range; Music, Fashion, Sport, Current Affairs, the Arts etc. Students work on projects both individually and in groups, each project has clear aims, objectives and language focus. Teachers use their skill and expertise to maximise each students individual potential and target any specific language problems. Project work is then presented to teachers and peers at the end of this week. This may take the form of a display including oral presentation, written work and art work, or a play, a short movie, a comic book, a role play or a song, for example. Students engage completely in the projects and some outstanding work has been produced.

The Capital School – Young Learners Programme is designed in a way that students not only develop and improve their linguistic skills in English but also gain confidence in themselves and their communicative skills.

They get an opportunity to work together with students of different nationalities, have fun and be creative and make lasting friendships.



FACILITIES

With Juniors based at the AUCB (Arts University College Bournemouth) we have a unique campus available where you will be in the company of other students of a similar age.

Reception/Juniors Administration

Friendly and welcoming staff will be on hand to help throughout the day covering all aspects of your stay Homestay and social programmes.

Classrooms

The classrooms are spread around the campus and are fitted out to a modern and high specification, ensuring that lessons are delivered in a comfortable environment incorporating audio-visual teaching aids.

Internet Suite

This complimentary facility is available to all students, in order to email their friends and family.

The Refectory

Lunch is served in the Refectory where additional refreshments are also available it is also the ideal place to relax, socialise and practise your English language skills with your classmates, teachers and social organisers before and after your lessons.

ACCOMMODATION

Most students are in half-board accommodation - this means a single or shared (twin bedded) room with breakfast and evening meal Monday to Friday and full board at the weekend.

Our 'Homestay' accommodation is a great opportunity to practise your English and to get to know the English culture.

We take particular care in selecting our accommodation to

ensure a safe, clean, comfortable and friendly environment for all our students.

The School's Accommodation Officer monitors the quality of service offered by our Homestays on a regular basis. We have a wide selection of Homestays to suit a variety of needs all within easy reach of the school.



S O C I A L A C T I V I T I E S



Interacting not only with your group, but also with other students is an important part of learning at Capital School of English and we like to make it as much fun as possible. Our Social

Organisers are here to make the 'out of class' activities as rewarding as the English lessons.

We cover a range of activities; **volleyball, football, bowling, table-tennis, crazy golf, swimming, adventure trails, treasure hunts, beach games, karaoke, International food parties** and much, much more.

Excursions

Whilst in the UK it's important that the students get to experience the cultural heritage of our language, therefore we run a number of trips, the most popular destinations include: **London, Oxford, Bath, Winchester, Salisbury & Stonehenge and the breathtaking Jurassic Coast.** Again we consult with the Group Leaders in the early stages to ensure that the students gain from these excursions and that their course work reflects these visits to key venues in the UK.



We have a group of experienced Social Organisers who have helped us develop a range of activities that are fun and interesting and ensure that your time is fully occupied at Capital School of English whether in or out of school.



CONTACT INFORMATION

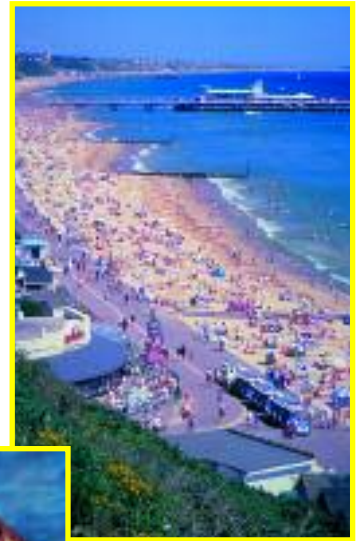
AROUND BOURNEMOUTH

www.capitalschool.co.uk



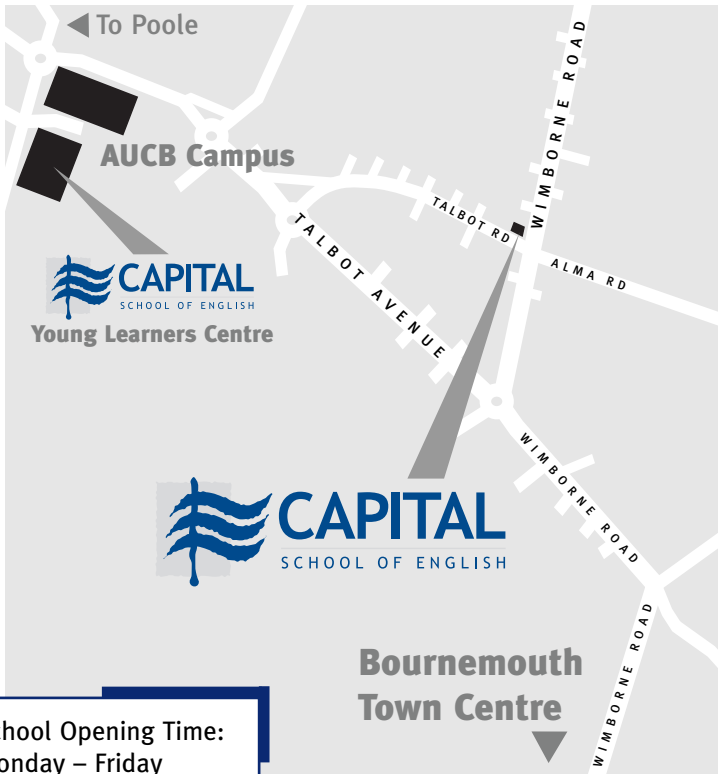
Capital School of English is located in Bournemouth on the South Coast, boasting some of the best beaches in the UK and is close to The New Forest and The Purbecks, yet only 2 hours from London by train. Bournemouth Airport, within easy reach of the school, is a gateway to a growing number of UK and European destinations.

Bournemouth has so much to offer Juniors on our **Young Learners Programme** providing a safe and fun environment to study and enjoy the Summer in the UK.



© bournemouth tourism

© bournemouth tourism



School Opening Time:
Monday – Friday
8.30 am – 5.30 pm



Capital S. E. Limited
324 Wimborne Road
Bournemouth
Dorset BH9 2HH • UK

Telephone: +44 (0)1202 546875
Facsimile: +44 (0)1202 546873
E-mail: info@capitalschool.co.uk
Website: www.capitalschool.co.uk



Licence No. VQG0CXXRX

